

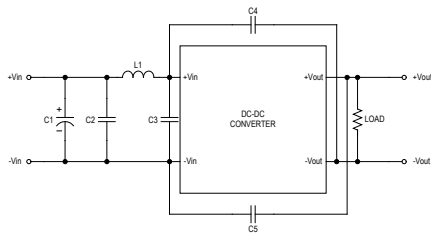


**MINMAX<sup>®</sup>**

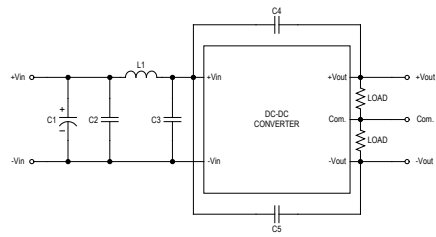
MCW04 Series - EMC Notes

# MCW04 Series - EMC Notes

## External Filter meets Total solution (for EFT & Surge & EMI) EN 55032, class A



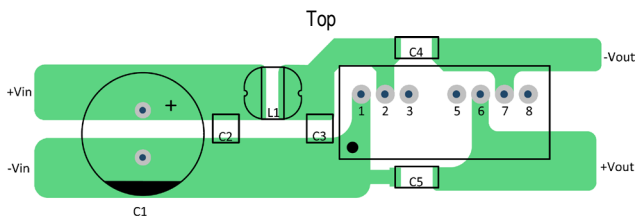
Single Output



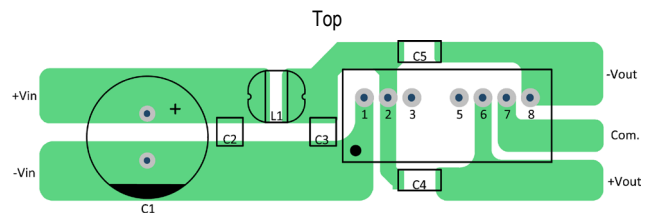
Dual Output

Model	C1	C2	L1	C3	C4, C5
MCW04-12SXX	330μF/50V CHEMI-CON KY Series	4.7μF/25V 1210 X5R	68μH/0.64A 744774168	4.7μF/25V 1210 X5R	220pF/2kV 1808 X7R
MCW04-12DXX	330μF/50V CHEMI-CON KY Series	4.7μF/25V 1210 X5R	10μH/1.7A 7447745100	4.7μF/25V 1210 X5R	220pF/2kV 1808 X7R
MCW04-24SXX	330μF/80V CHEMI-CON KY Series	4.7μF/50V 1210 X5R	68μH/0.64A 744774168	4.7μF/50V 1210 X5R	220pF/2kV 1808 X7R
MCW04-24DXX	330μF/80V CHEMI-CON KY Series	4.7μF/50V 1210 X5R	4.7μH/1.82A 744773047	4.7μF/50V 1210 X5R	220pF/2kV 1808 X7R
MCW04-48SXX	330μF/100V CHEMI-CON KY Series	4.7μF/100V 1210 X5R	100μH/0.57A 74477420	4.7μF/100V 1210 X5R	220pF/2kV 1808 X7R
MCW04-48DXX	330μF/100V CHEMI-CON KY Series	4.7μF/100V 1210 X5R	4.7μH/1.82A 744773047	4.7μF/100V 1210 X5R	220pF/2kV 1808 X7R

## Recommended PCB Layout with Input Filter



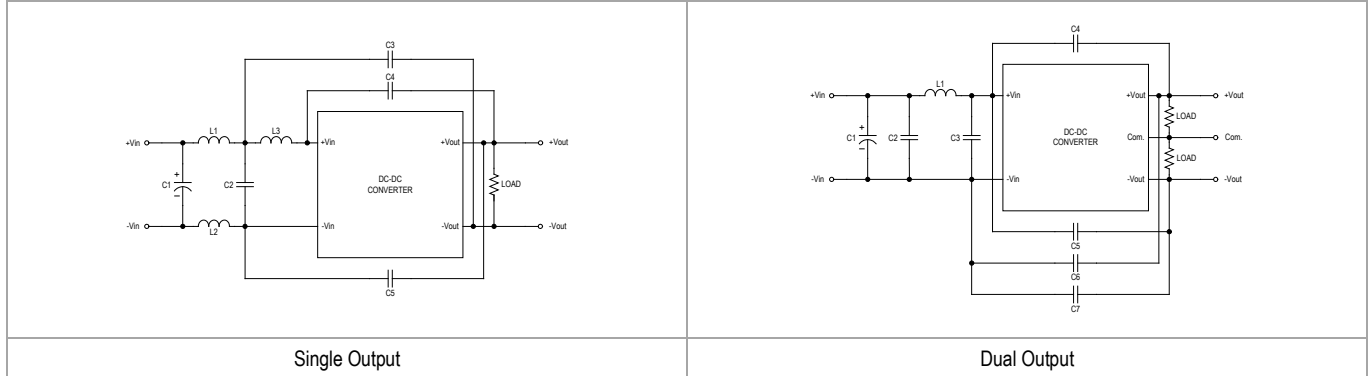
Single Output



Dual Output

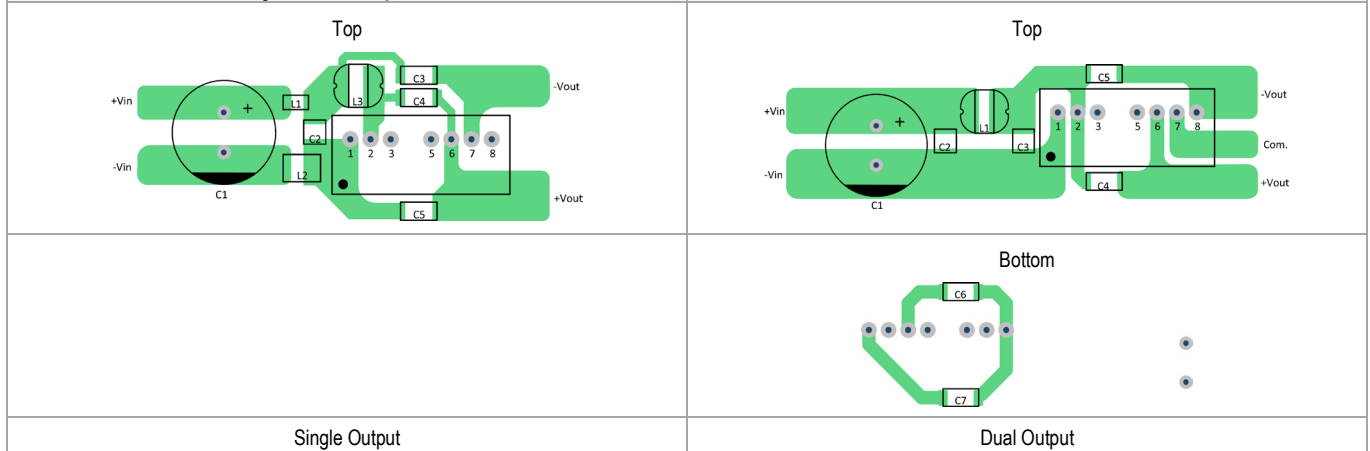
# MCW04 Series - EMC Notes

## External Filter meets Total solution (for EFT & Surge & EMI) EN 55032, class B



Model	C1	L1	L2	C2	L3	C3	C4, C5	C6, C7
MCW04-12SXX	330µF/50V CHEMI-CON KY Series	74279252/4A	74279252/4A	22µF/25V 1206 X5R	68µH/0.64A 744774168	220pF/2kV 1808 X7R	220pF/2kV 1808 X7R	---
MCW04-12DXX	330µF/50V CHEMI-CON KY Series	10µH/1.7A 7447745100	---	4.7µF/25V 1210 X5R	---	4.7µF/25V 1210 X5R	220pF/2kV 1808 X7R	220pF/2kV 1808 X7R
MCW04-24SXX	330µF/80V CHEMI-CON KY Series	742792133/0.5 A	74279252/4A	10µF/50V 1206 X5R	68µH/0.64A 744774168	220pF/2kV 1808 X7R	220pF/2kV 1808 X7R	---
MCW04-24DXX	330µF/80V CHEMI-CON KY Series	4.7µH/1.82A 744773047	---	4.7µF/50V 1210 X5R	---	4.7µF/50V 1210 X5R	220pF/2kV 1808 X7R	220pF/2kV 1808 X7R
MCW04-48SXX	330µF/100V CHEMI-CON KY Series	742792133/0.5 A	74279252/4A	4.7µF/100V 1210 X5R	100µH/0.57A 74477420	220pF/2kV 1808 X7R	220pF/2kV 1808 X7R	---
MCW04-48DXX	330µF/100V CHEMI-CON KY Series	4.7µH/1.82A 744773047	---	4.7µF/100V 1210 X5R	---	4.7µF/100V 1210 X5R	220pF/2kV 1808 X7R	220pF/2kV 1808 X7R

## Recommended PCB Layout with Input Filter



Approved by : \_\_\_\_\_ Checked by : \_\_\_\_\_ Designed by : \_\_\_\_\_